



# ***DAMMANN Trailed sprayer***

***Classic***

***Profi-Class***

***Profi-Class Tandem***

***Profi-Class Tridem***







# DAMMANN Classic

## THE SOLID GERMAN WORK UNIT

Your entry into the top class! The **DAMMANN Classic** trailed sprayer is characterized by a compact design and already offers a full ring flushing line, pneumatic nozzle control and ISOBUS control as standard. The solid basic equipment can be individually extended by numerous options.

- | 5 - 12 sections
- | Single nozzle holder
- | Injector for increasing suction power during filling
- | Large suction and pressure filter
- | Permanent pressure filter flushing
- | Pneumatic equal pressure diaphragm body

>>

### OPTIONS

- | Up to 18 boom sections
- | Tandem | Quattro nozzle holder
- | Curve Control
- | Steering Drawbar
- | Air suspension

Tank volume   Tires	4.400 l	520/85 R38
	5.000 l	520/85 R38
	6.000 l	520/85 R42
Fresh water	500 l	
Working width	18 - 39 m	
Pump capacity	250 - 320 l/min with piston diaphragm pump	
Track	1,80 - 2,25 m	
Speed	40 km/h	





# DAMMANN Profi-Class

## THE COMPREHENSIVE

The **DAMMANN Profi-Class** trailed sprayer is the top seller in our product range. It is distinguished by its extensive basic equipment, which meets the requirements of professional crop protection. The serial equipment includes tandem nozzle carrier, automatic pressure filter flushing, agitator switching and pressure line drainage.

- | 7 - 12 sections
- | Tandem nozzle holder
- | Injector to increase the suction capacity during filling
- | Large suction and pressure filter

### OPTIONS

- | Quattro nozzle holder
- | ProControl
- | HD-Night LUX
- | Steering drawbar
- | Air suspension



Tank volume   Tires	5.000 l	520/85 R38
	6.000 l	520/85 R42
	7.000 l	520/85 R46
Fresh water	500 l	
Working width	24 - 39 m	
Pump capacity	320 - 500 l/min with piston diaphragm pump	
Track	1,95 - 2,25 m	
Speed	40 km/h	





# DAMMANN Profi-Class Tandem

## THE GRANDIOSE

The standard equipment of our **DAMMANN Profi-Class Tandem** trailed sprayer is identical to the equipment of the Profi-Class. The air-suspended tandem chassis allows a tank volume up to 14.000 l in compliance with road traffic regulations. The automatic self-steering axle enables stock-protecting work. The high tank volume reduces filling and standstill times and thus increases productivity in the field.

- | 7 - 12 sections
- | Tandem nozzle holder
- | Injector to increase suction power during filling
- | ISOBUS control

>>

### OPTIONS

- | Quattro nozzle holder
- | HD-Night LUX
- | ATC tire pressure control system
- | Front axle relief
- | Speed 60 km/h

Tank volume   Tires	8.000 l	520/85 R42
	10.000 l	520/85 R42
	12.000 l	520/85 R42
	14.000 l	520/85 R42
Fresh water	500 l	
Working width	27 - 48 m	
Pump capacity	500 l/min with piston diaphragm pump	
Track	2,00 - 2,25 m	
Speed	50 km/h	





# DAMMANN Profi-Class Tridem

## THE EXCELLENT CLASS

The new dimension in crop protection! The **DAMMANN Profi-Class Tridem** trailed sprayer sets, with its 20.000 l tank volume and its three-axle chassis concept, new standards in terms of impact and efficiency. With the mechanical-hydraulic steering of the 1st and 3rd axles, it ensures controlled cornering and optimum road holding.

- | 12 sections
- | Tandem nozzle holder
- | Hydraulic drawbar suspension
- | K80 ball coupling, towball loads up to 4 t
- | ISOBUS control

OPTIONS

- | Quattro nozzle holder
- | HD-Night LUX
- | ATC tire pressure control system
- | Front axle relief for more traction
- | Single nozzle control



Tank volume   Tires	20.000 l   540/80 R42
Fresh water	500 l
Working width	36 - 48 m
Pump capacity	500 l/min with piston diaphragm pump
Track	2,15 - 2,25 m
Speed	50 km/h





# EQUIPMENT

OPTIONS

---

## DAMMANN TERMINALS & JOYSTICK

**DAMMANN** terminals comply with the ISO 11783 standard and are AEF certified. They have a high resolution display quality and are equipped with touch operation. Additional functions can be added through apps. Thanks to the day and night mode, the terminals are adaptable to all lighting conditions. Comfortable and intuitive one-hand operation of the trailed sprayer via joystick.

**HD 8 pad**



**Joystick**



## OPTIONS

With the **HD 10 pad** and **HD 1260 pad** terminals, uncomplicated transfer of application cards is possible thanks to the integrated Wifi interface. In addition, a view of several applications at the same time is adjustable.

**HD 10 pad**



**HD 1260 pad**



## ISOBUS JOB PROCESSING TASK-CONTROLLER

- | Convenient documentation
- | Easy planning of applications
- | Data exchange with the FMIS
  - Via ISO-XML
  - Shape format
- | Imports and exports finished documentation for the Farm Management Information System (FMIS)





## SECTION-CONTROL

- | GPS-controlled switching on and off of sections or individual nozzles
- | Mark obstacles and save field data, such as boundaries and guidance lines
- | Interrupted work processes can be continued at any time
- | HEADLAND Management® included
- | Can also be used for other equipment

### ADVANTAGES

- | Fewer overlaps
- | Reduced workload for the operator
- | Savings in resources



## GPS RECEIVER

- | Correction signals EGNOS, WAAS, GLONASS, GLIDE or RTK
- | Deviations between 2 - 25 cm (depending on GPS receiver)
- | Mounting of all common GPS receivers possible

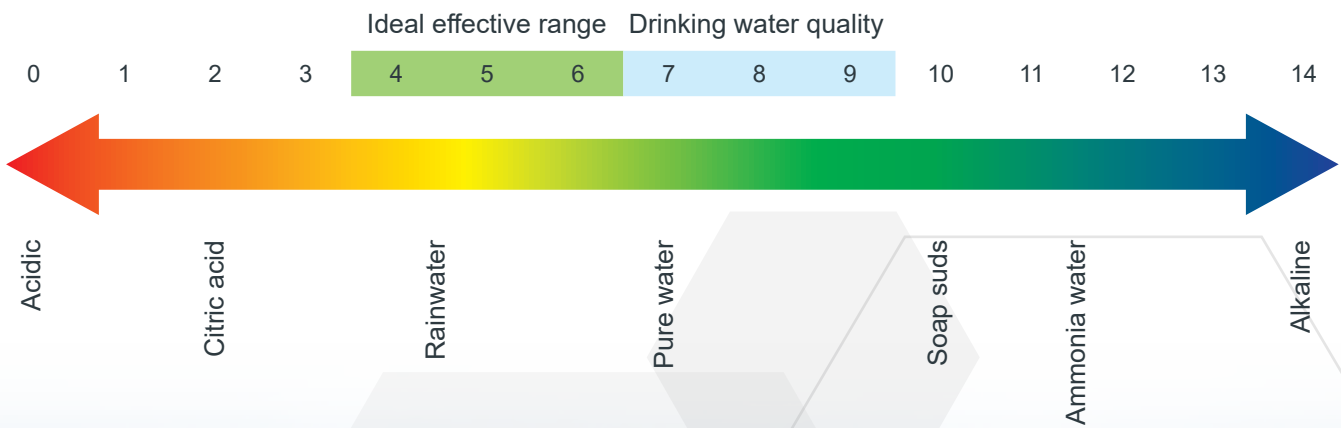
## WEATHER STATION | WIND SENSOR

- | Recording by ISOBUS
- | Display of data on ISOBUS terminal
  - Air temperature
  - Wind direction
  - Air pressure
  - Relative humidity
  - Longitudinal/cross slope
  - Apparent and actual wind speed



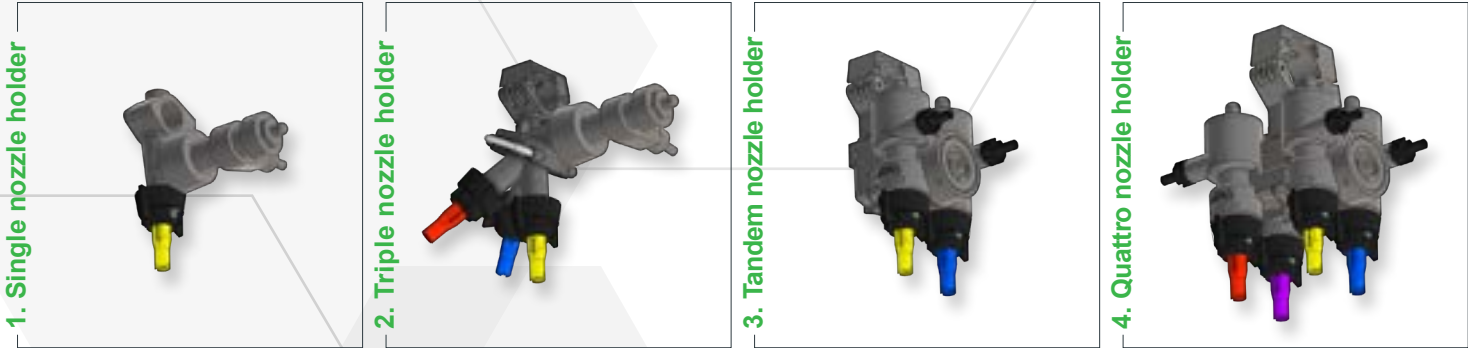
## DAMMANN FLUID INDICATOR

- | Display of pH value and temperature
  - Measurement of pH value and temperature in the tank sump
  - Indication in display and terminal
  - Operator can influence the pH value of crop protection agents during flushing in
- | Influence of pH value on crop protection agent
  - Greater effect of the crop protection agent at an ideal pH value
  - Reduction of saponification
  - Resistance is prevented by an ideal pH value
- | Water temperature plays a role
  - Better solubility with warm water, especially with saline components in the chemicals





NOZZLE CARRIER | NOZZLE PIPE



- 1/2" stainless steel nozzle pipe
  - OPTION:** 1" Stainless steel nozzle pipe
- Pressure recirculation flushing
  - Immediate availability of spray liquid at the nozzle holders
  - Prevents uneven start of the nozzles (butterfly effect)
  - Permanent circulation, no deposits
- Pneumatic pressure line drainage (**OPTION:** Classic)
  - Reduction of the residual quantity and effective cleaning of the pressure line
- Individual adaptation of 7 - 18 part widths according to customer requirements
  - OPTION:** Single nozzle control

OPTIONS

- SINGLE NOZZLE HOLDERS
- TRIPLE NOZZLE HOLDERS
- QUATTRO NOZZLE HOLDER WITH MULTIFUNCTIONAL SWITCHING

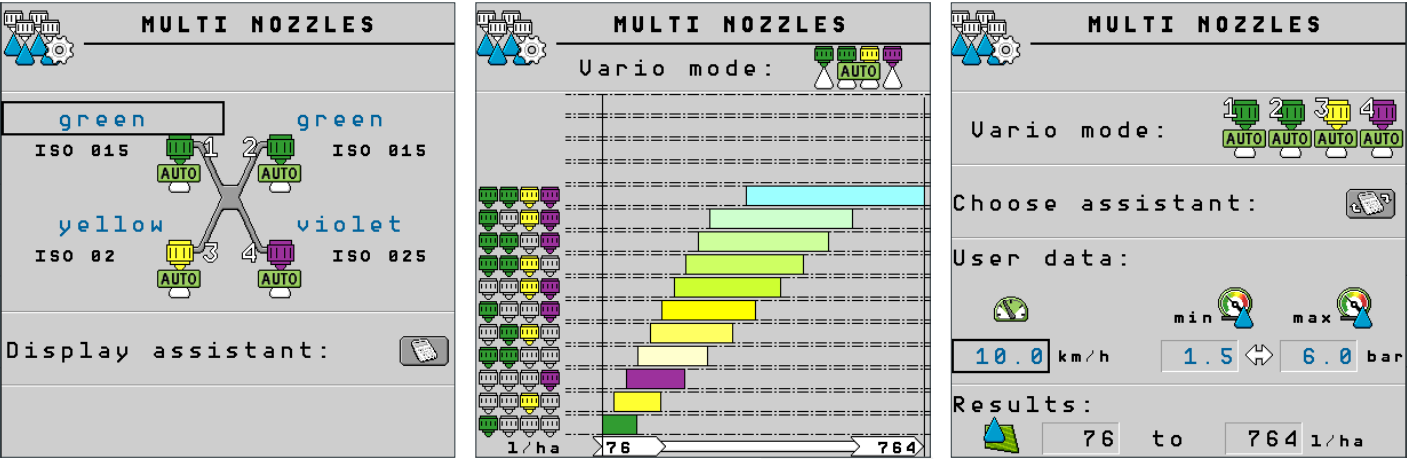
NOZZLE CONTROL

<b>VARIO-SELECT</b> Automatic multifunction control	<b>MULTI-SELECT</b> Management of two nozzle sets in one nozzle line
<b>C~C~A®</b> Curves ~ Control ~ Application	<b>T-S-D</b> Area specific nozzle switching
<b>EDS</b> Single nozzle control	<b>GREEN-SMART-SPRAYING</b> Smart and precise weed control



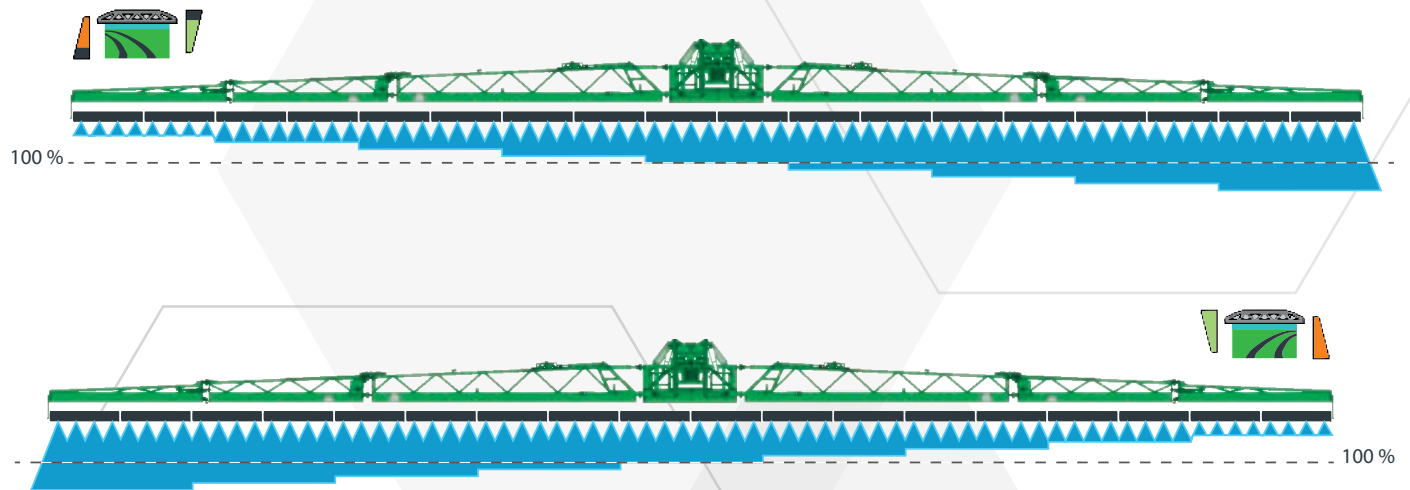
VARIO-SELECT

- Constant drop size at changing speed
- Automatic changeover between nozzles for nozzle holders with multifunction switching
- Use of multiple nozzles on tandem and quattro nozzle holders
- Nozzle change without interruption of work



CURVES ~ CONTROL ~ APPLICATION

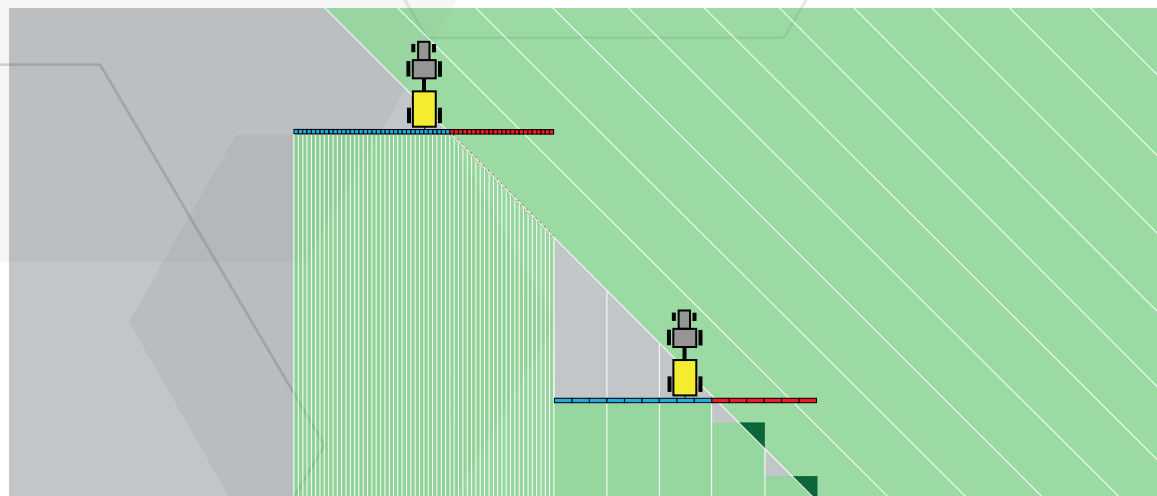
- Calculates the different application rates in curves
- Sensors determine the curve radius
- Automatic adjustment of the application rate via nozzle control





## E-D-S SINGLE NOZZLE CIRCUIT

- | Savings potential due to reduction of total overlap area
  - Less than 1% overlap possible with GPS-controlled switching
- | Operator friendly

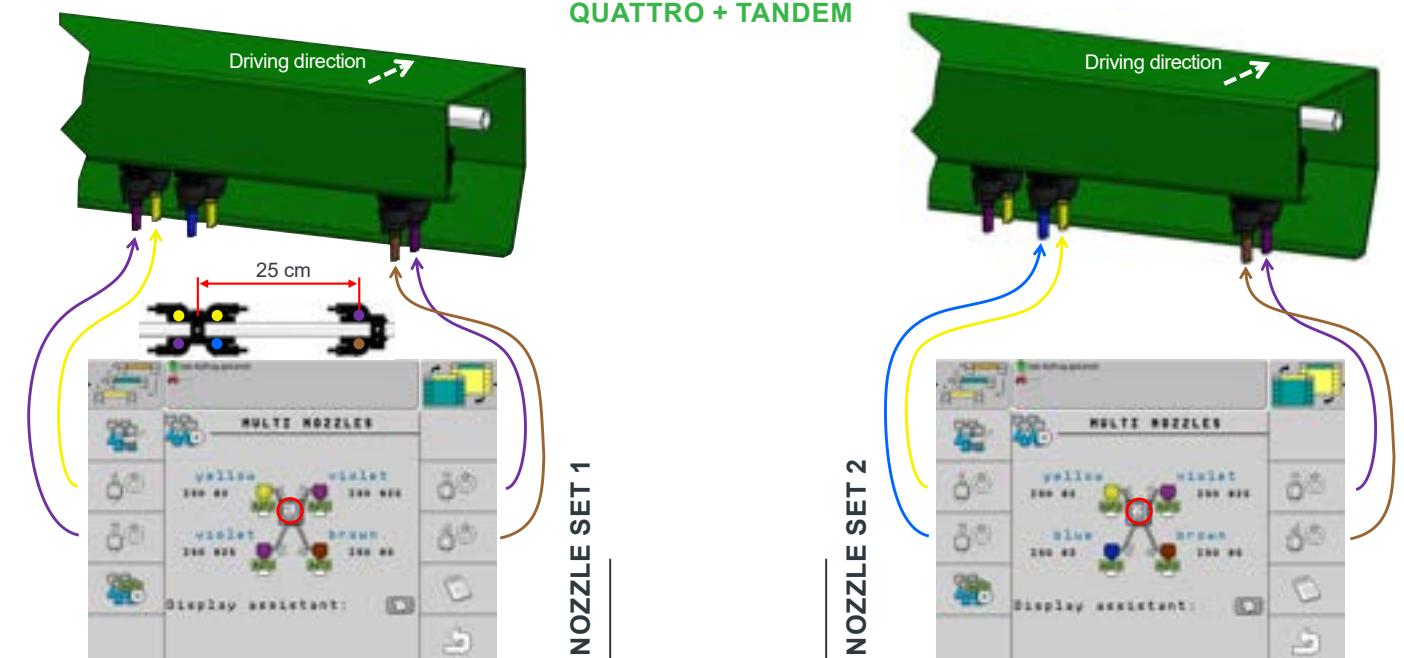


## MULTI-SELECT

- | Management of two nozzle sets per nozzle line
- | Up to four nozzles per nozzle set possible
- | Fast changeover from 25 to 50 cm
- | Selection and control of nozzle sets via Vario-Select on the ISOBUS terminal
- | Use from single to quattro nozzle holders possible every 25 cm

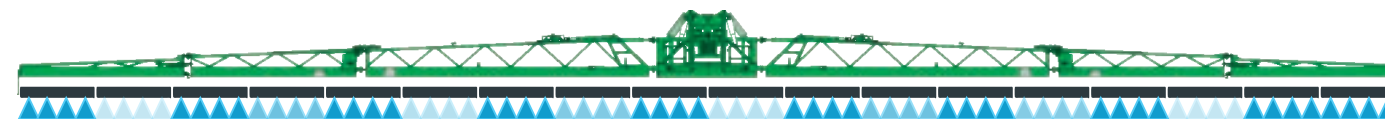
### NOZZLE ADJUSTMENT 25 CM NOZZLE SPACING

#### QUATTRO + TANDEM



## T-S-D NOZZLE SWITCHING FOR SPECIFIC AREAS

- | Area treatment according to application map
- | Different application rates within the working width



## GREEN-SMART-SPRAYING

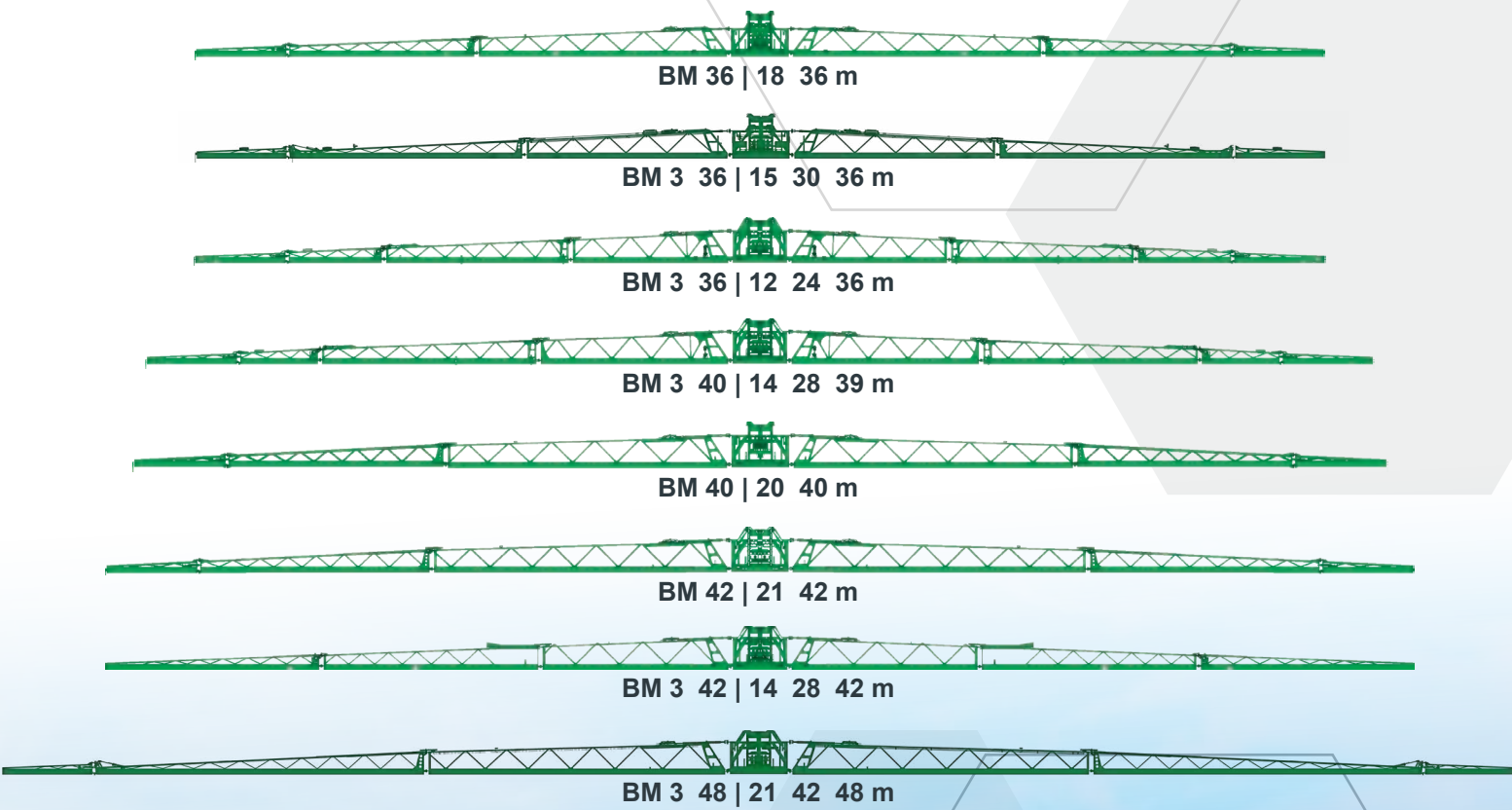
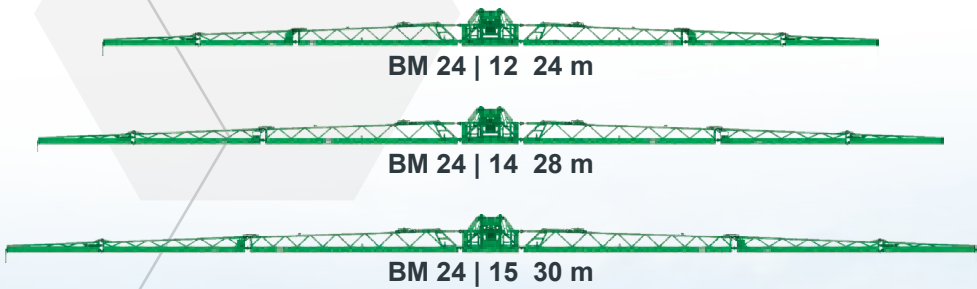
- | Maximum savings with optimum weed control
- | Cost reduction due to savings on chemicals
- | Targeted and environmentally friendly application
- | Weed detection: green on brown | green on green | row





# BOOM

- | Sturdy spray booms with hydraulic folding and special G-shape to protect the nozzles
- | Slope control as standard for working in cropped terrain
- | Electropneumatic slope compensation via double cylinders
- | Outer booms made of aluminum for weight reduction with collision safety device
- | Spring-loaded, horizontally and vertically damped boom suspension
- | Stable lift mast with stepless height adjustment without weight transfer
- | Stable pendulum suspension for smooth boom guidance, even in rough terrain
- | Link chain guide to protect all hoses and lines in the lift mast





## FLEXIBLE WORKING WIDTHS

- | For different tramline widths
  - Flange plates
  - Manual folding joints
  - Hydraulic folding joints
- | Controllable via ISOBUS terminal



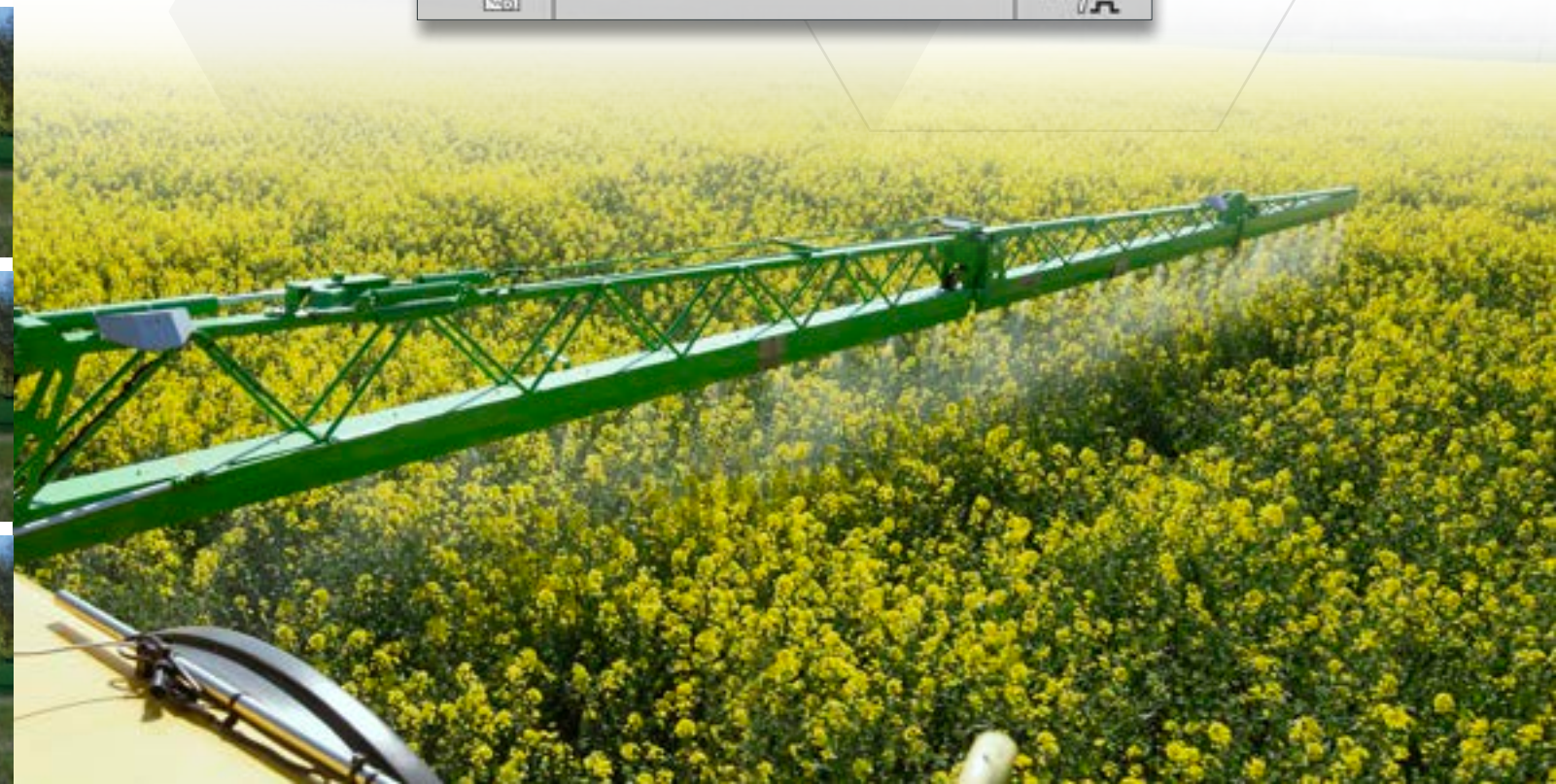
## BOOM LINKAGE

- | Perfect extension to boom control
- | Angulation advantageous in rough terrain
- | Keeps constant distance to the crop by sensors



## DCD-DISTANCE CONTROL DAMMANN

- | Combines the advantages of hydraulics (speed) and pneumatics (smooth repositioning) in one boom control system
- | Monitoring of the optimum boom position by up to six ultrasonic sensors
- | Detection and anticipation of gravitational forces in curves
- | Fast and simple operation
- | Boom working height above the crop can be set in the terminal with centimeter accuracy
- | Possible boom control modes depending on the DCD's features
  - Lifting/Lowering
  - Tilting
  - Angling/Tilting
  - Lifting/Lowering + Tilting
  - Lifting/Lowering + Angling/Bending
  - Lifting/Lowering + Angling/Bending + Tilting





## DAMMANN GRP SAFETY TANKS

- | Proven case shape
- | GRP gelcoated
- | Easy cleaning due to smooth inner walls
- | Baffles for additional safety
- | Integrated fresh water tank 500 l
- | Up to 10 % safety volumen

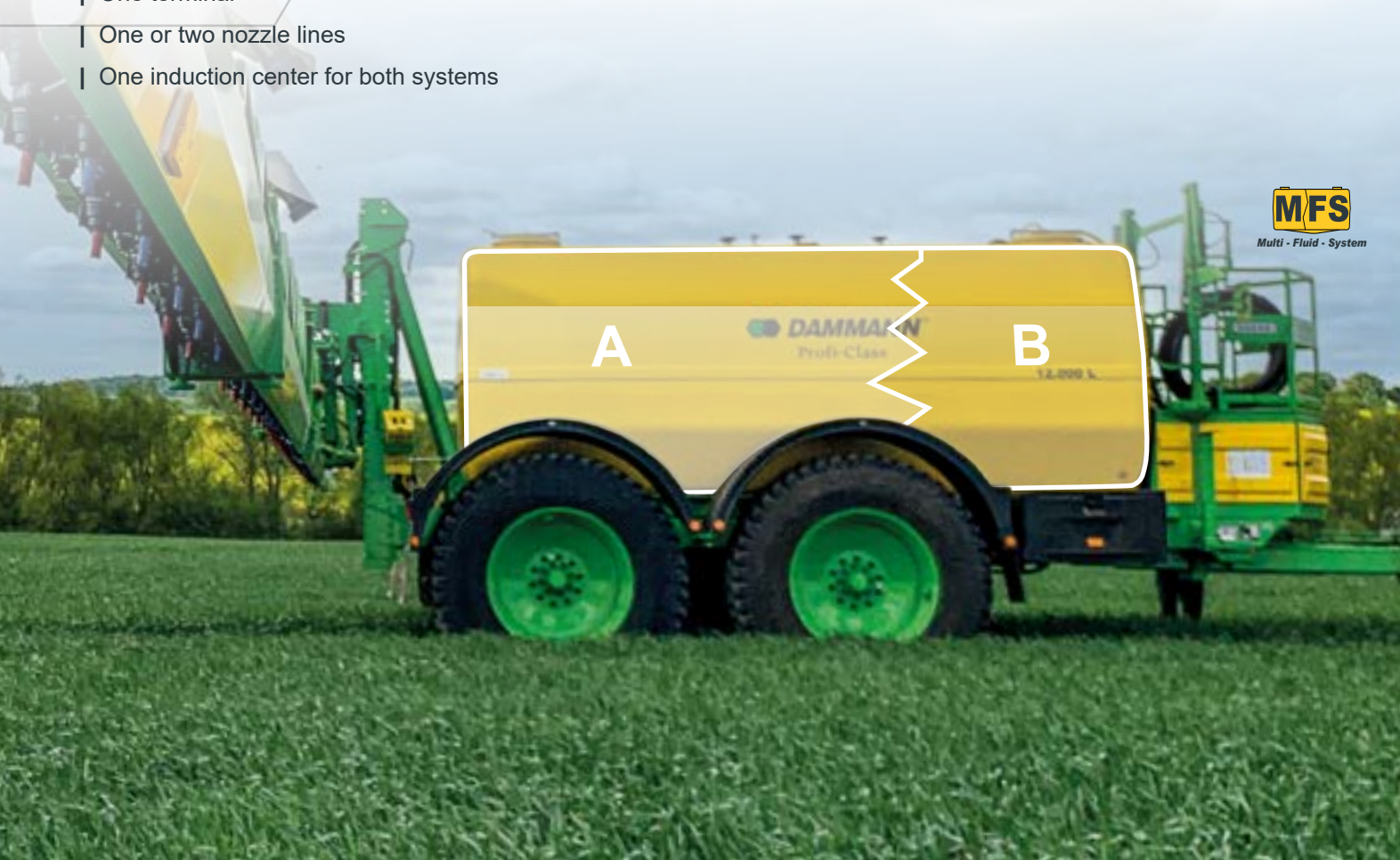
### OPTIONS

#### EXTERNAL FILLING

- | Filling via 2" or 3" external filling connection with camlock coupling and shutoff valve
- | Filling via hydrant filling connection with C- or B-coupling and non-return valve
- | Pneumatic emptying of the external filling hose
- | Bypass at the injector for direct external filling with fresh water at the induction hopper

## MFS - MULTI-FLUID-SYSTEM

- | Two systems in one sprayer
- | One tank with two chambers
- | Two spraying systems
- | One terminal
- | One or two nozzle lines
- | One induction center for both systems



## RRW - ROTATING AGITATOR AND CLEANING SYSTEM

- | Installation centrally in the lower part of the tank
- | Special injector nozzles for agitating and cleaning the tank
- | The swivel angle is controlled depending on the filling level
- | Outstanding agitation function for producing homogeneous spray liquid
- | Effective tank interior cleaning due to 360° rotation of the nozzle shaft
- | Activation of tank cleaning possible via the control terminal and from the cabin
- | JKI tested



## LIQUID CONTROL | CLEANING

### PUMP

- | Self-priming piston diaphragm pump
- | Robust and durable design
- | Pump capacity depending on equipment and customer requirements 250 - 750 l/min
- | Easily accessible



### PNEUMATIC EQUAL PRESSURE DIAPHRAGM BODY

- | Automatic adjustment of equal pressure when changing nozzles
- | Fast adjustment of the spray rate
- | Low maintenance



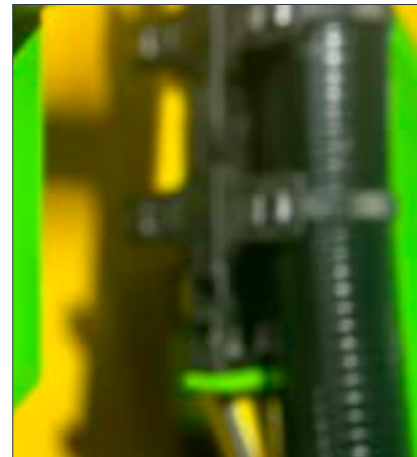


## INDUCTION HOPPER AND INJECTOR

- | 60 l volume
- | Fresh water supply during filling
- | With ring flushing, which generates a rotating liquid flow
- | For dilution and lump-free flushing of crop protection chemicals
- | Shock nozzle - for easy loosening of solid clumps
- | Integrated, powerful canister flushing for crop protection containers
- | Ergonomic and operator-friendly working height
- | Injector also enables solids to be sucked from the induction hopper into the tank
  - System suction capacity with pump and injector up to 1,000 l/min
  - Faster filling of the tank
- | **OPTION:** Pneumatic lifting and lowering of the induction hopper

## EASYCONTROL

- | Integrated in ISOBUS system
- | Digital level indicator
- | Switching functions of the ISOBUS system on the implement
  - Working light
  - **OPTION:** Injection center lifting/lowering



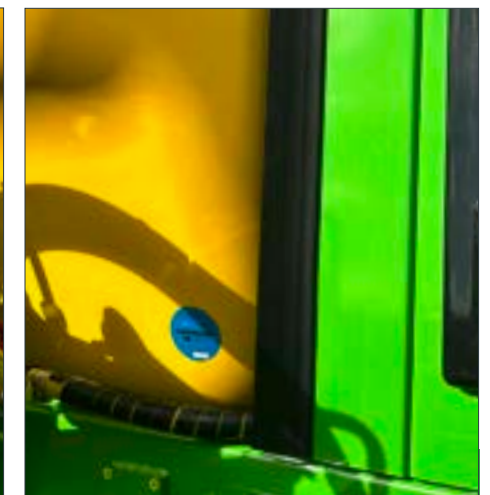
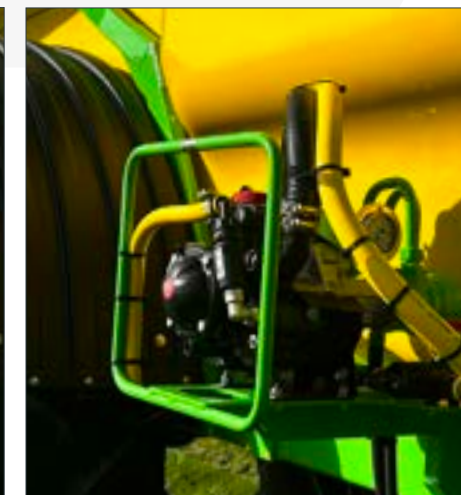
## OPTIONS

### PROCONTROL III

- | For program-controlled filling and cleaning sequences
- | Automated cleaning modes
- | Functions of *proControl III* possible from the cab as well as at the induction hopper
- | *proControl III* also cleans the induction hopper during cleaning processes
- | Switching functions of the ISOBUS system on the machine
  - Working lights
  - **OPTION:** Induction hopper lifting/lowering

## CID - CONTINUOUS INSIDECLEANING DAMMANN

- | Automatic and level-controlled continuous insidecleaning **DAMMANN**
- | Level sensor controlled, automatic start of CID
- | Easy handling and thorough cleaning of the crop sprayer
- | Interrupts cleaning when fill level is too high
- | High cleaning efficiency with lower fresh water requirement
- | High user protection, operator can start internal cleaning from the cab or via EasyControl
- | Sufficient fresh water remains in the fresh water tank for final interior and exterior cleaning
- | JKI tested





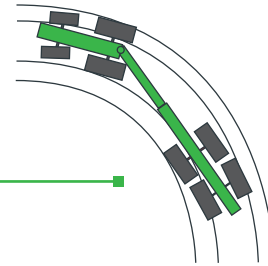
## STEERING DRAWBAR

- | True tracking of the trailed sprayer within the tramline
- | Increased maneuverability
- | Minimization of stock damage

STEERING DRAWBAR  
WITH TRUE TRACKING



STRAIGHT  
DRAWBAR



## BOTTOM HITCH (NOT IN COMBINATION WITH D-A-S)

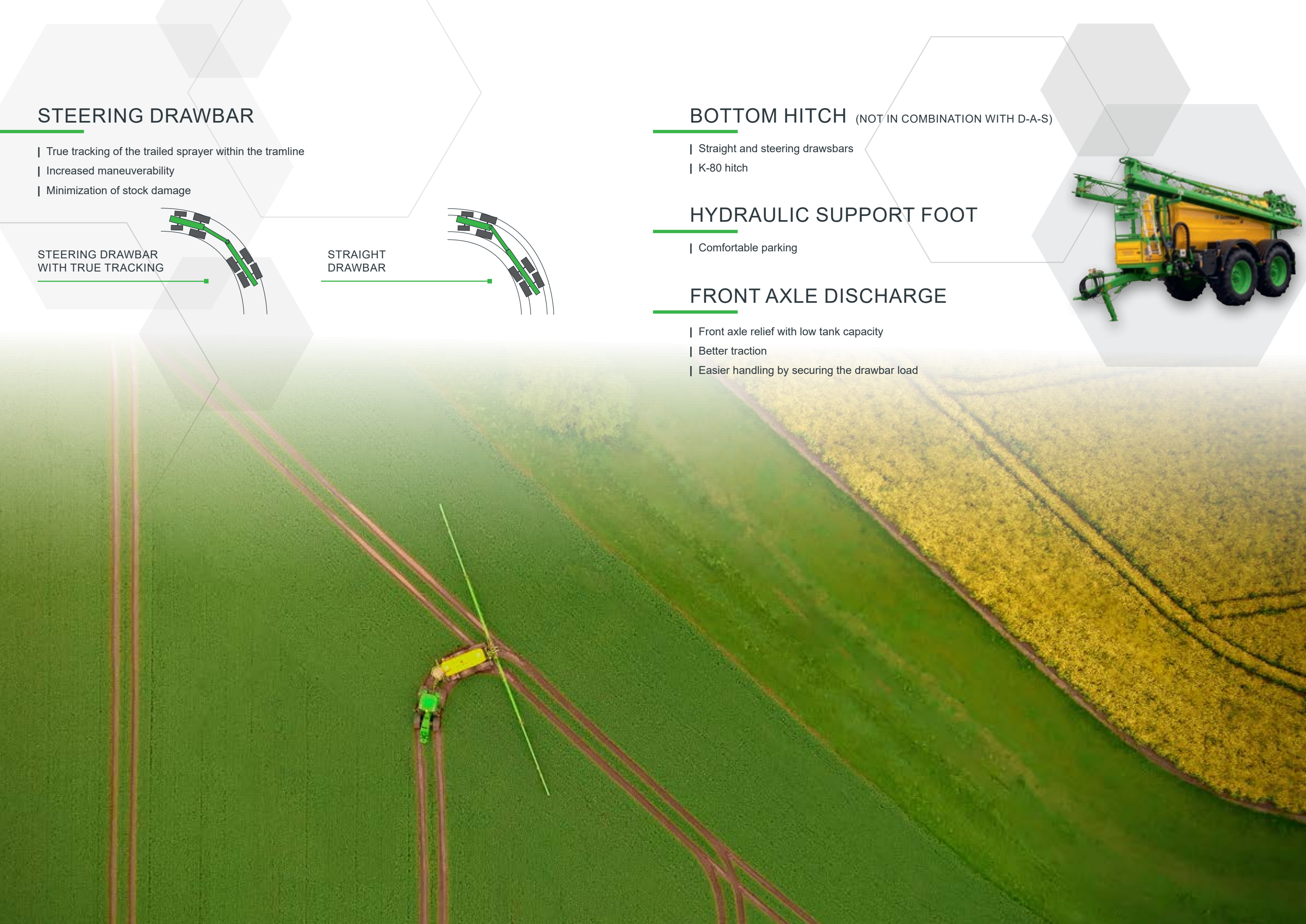
- | Straight and steering drawbars
- | K-80 hitch

## HYDRAULIC SUPPORT FOOT

- | Comfortable parking

## FRONT AXLE DISCHARGE

- | Front axle relief with low tank capacity
- | Better traction
- | Easier handling by securing the drawbar load





## CAMERA SYSTEMS

- | Reversing control with a camera
- | Display options
  - On separate monitor
  - Connection of the system to the ISOBUS terminal with camera input
- | Additional LED lighting possible for the camera viewing area



View behind the vehicle

## TIRE PRESSURE CONTROL SYSTEM

- | Ideal rolling resistance on the road to save fuel and minimize tire wear
- | Optimal ground loading in the field
- | Control via ISOBUS terminal

### OPTIONS

#### ADAPTIVE-TIRE-CONTROL

An automatically level-controlled adjustment of the tire inflation pressure by ATC..

- | Integrated in the ISOBUS control of the implement
- | Auto-switching field and road with status display
- | Auto-adjustment to tank level

#### COMPRESSOR

Additional compressor for fast filling



## TRAILER COUPLING

- | Trailer coupling up to 12 t
- | Two-line brake system
- | Trailer socket
- | Ideal for carrying a water trailer

## CENTRAL LUBRICATION

On every **DAMMANN trailed sprayer**, each axle can be greased centrally via a lubrication bar, the so-called central lubrication bar. This ensures easy accessibility.



### OPTIONS

#### CENTRAL LUBRICATION SYSTEM

While the machine is running, the central lubrication system supplies each lubrication point with the necessary grease. Each bearing and bushing on the machine thus receives the amount of lubricant it really needs. The system is absolutely reliable, electronically precisely controlled and exactly dosed.

- | No annoying downtimes
- | Increases operational readiness and reliability
- | Reduces maintenance costs
- | Monitors flow rate, pressure and grease level
- | Automates maintenance
- | Operation integrated in vehicle display
- | Additional extension of central lubrication on lift mast, boom and the steering drawbar







## LIGHTING SYSTEMS

### HD-NIGHT LUX

- | Each spray cone is illuminated by an LED
- | Visual control of the function of all switched-on nozzles
- | No overlit field
- | Obstacle finder at the end of the boom

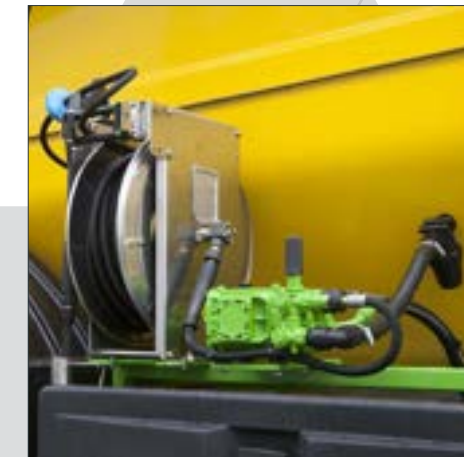
### LED WORK LIGHTS

- | Mounting of two or more LED worklights
- | Positioning of lights according to customer requirements
- | Reversing spotlight



## EQUIPMENT OUTSIDE CLEANING

- | Washing brush with hose reel - 15 bar
- | Vario spray tube with hose reel - 15 bar
- | High pressure cleaner with 120 bar, hydraulically driven





## D-A-S - DUAL-AIR-SYSTEM

- | The intelligent solution for the environmentally conscious economist
- | Reduced drift, even at low crop heights and on bare soils
- | Greater independence from weather conditions - Time window of treatments is increased
- | Increased uniformity of active ingredient accumulation in the stand
- | Increased crop penetration, especially in specialty crops such as vegetables, lettuce and potatoes.
- | The powerful, adjustable air jets deliver the active ingredient to the target area even in tall crops (e.g. sunflowers).
- | Better active ingredient accumulation in the crop leads to less evaporation losses at high temperatures
- | Reduction of average and water application rates
- | The system is registered in the JKI's list of „loss-reducing devices“





# **DAMMANN®**



**Pflanzenschutztechnik  
Fahrzeugtechnik  
Airporttechnik**



**HERBERT DAMMANN GmbH**

Dorfstraße 17  
21614 Buxtehude-Hedendorf

Phone +49 4163 8163 0  
Fax +49 4163 8163 71

[www.dammann-technik.de](http://www.dammann-technik.de)  
[info@dammann-technik.de](mailto:info@dammann-technik.de)

NOV2025 ENG  
Technical modifications  
subject to change  
without notice.